



# S4 HEALTHCARE PVT LTD

## SAFETY KIT

S4 Healthcare Pvt Ltd

Unit 22-25 Sheetal Supreme Industrial Estate No. 2, Sativali Road, Vasai East 401208

Contact No: +91 7385033785 / +91 22-67348888

Email ID: [info@s4healthcare.com](mailto:info@s4healthcare.com) / [sales@s4healthcare.com](mailto:sales@s4healthcare.com)

Website: [www.s4healthcare.com](http://www.s4healthcare.com)





## TIMES WHEN YOU SHOULD WEAR A PP KIT DURING INFECTIOUS PANDEMICS

- When giving a bed bath
  - Mask, Gloves & Gown
- When suctioning oral secretions
  - Gloves, Mask & Goggles – sometimes Gown
- When transporting a patient in a wheel chair
  - Gloves & Mask
- When responding to an emergency where blood is spurting
  - Gloves, Gown, Mask & Goggles
- When drawing blood from a vein
  - Gloves
- When cleaning an incontinent patient with diarrhoea
  - Gloves, Mask, Gown
- Irrigating a wound
  - Gloves, Gown, Mask & Goggles
- Taking vital signs
  - Mask





# 6 Pc KIT



## CONTENTS OF SAFETY KIT

- ISOLATION GOWN / PROTO GOWN: Protective clothing, protect skin from head to ankles.
- GLOVES: Protective gear for hands.
- SHOE COVER: Protect footwear.
- FACE MASK 3PLY: Respiratory protection, coverage area include mouth and nose.
- GOGGLES / FACE SHIELD: Protect eyes and face.
- WASTE BAG: For containment of biohazard waste.





# ISOLATION GOWN

Disposable isolation gowns are a type of protective clothing article used by medical and industrial personnel to avoid exposure to blood, body fluids, chemical fluids, and other infectious materials or to protect patients from infection. The gown is a two-way isolation that prevents both medical personnel from being infected or contaminated and prevents the patient from being infected.

## SPECIFICATIONS

- SIZE :
  - Length: 65" (Including hood cover)
  - Chest: 53"
  - Cuff / Wrist Ring (Fully extended): 6"
  - Sleeves: 23.5"
  - Lace:
- MATERIAL : NON WOVEN + PP SPUNBOUND  
: SMS
- GSM : 50GSM (35 +15) / 90GSM (70 + 20)
- FASTENING : LACE
- COLOUR : WHITE / BLUE
- ADDED FEATURE : SLIT FOR COMFORT IN MOBILITY, THICK LACE FOR SECURE FASTENING
- PROTECTION RANGE : SHOULDER TO KNEE







# PROTO GOWN

## SPECIFICATIONS

- SIZE :
  - Length: 65" (Including hood cover)
  - Chest: 53"
  - Cuff / Wrist Ring (Fully extended): 6"
  - Sleeves: 23.5"
  - Lace:
- MATERIAL : NON WOVEN + PP SPUNBOUND  
: SMS
- GSM : 50GSM (35 +15) / 90GSM (70 + 20)
- FASTENING : LACE
- COLOUR : WHITE / BLUE
- ADDED FEATURE : SLIT FOR COMFORT IN MOBILITY, THICK LACE FOR SECURE FASTENING, ELASTIC CUFF
- PROTECTION RANGE : SHOULDER TO KNEE







# FACE MASK

## SMT 05

### CONSTRUCTION

INNER LAYER : NON WOVEN + PP SPUNBOUND 18GSM

FILTER LAYER : NON WOVEN + PP SPUNBOUND + MELTBLOWN 18GSM

OUTER LAYER : NON WOVEN + PP SPUNBOUND 25GSM

LACE : NON WOVEN + PP SPUNBOUND 32GSM

### MEASUREMENT

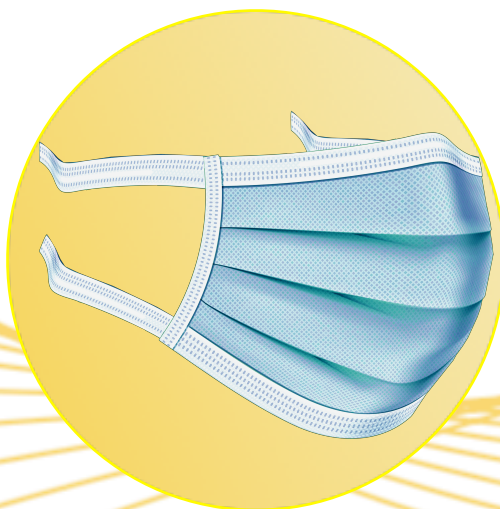
LENGTH: 18CM  $\pm$  5%

WIDTH : 9CM  $\pm$  5% (NOT LESS THAN 16CM WHEN FULLY EXTENDED)

NUMBER OF PLEATS : 3

LACE 91CM  $\pm$  5%

NOSE STRIP : NOT LESS THAN 100MM X 2MM



## SML 05

### CONSTRUCTION

INNER LAYER : NON WOVEN + PP SPUNBOUND 18GSM

FILTER LAYER : NON WOVEN + PP SPUNBOUND + MELTBLOWN 18GSM

OUTER LAYER : NON WOVEN + PP SPUNBOUND 25GSM

### MEASUREMENT

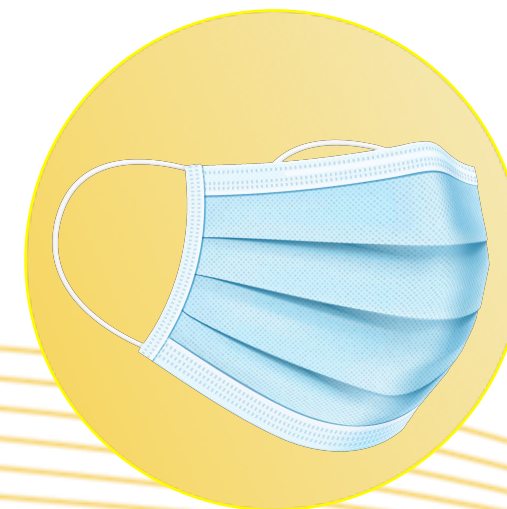
LENGTH: 18CM  $\pm$  5%

WIDTH : 9CM  $\pm$  5% (NOT LESS THAN 16CM WHEN FULLY EXTENDED)

NUMBER OF PLEATS : 3

LOOP : 14.5CM  $\pm$  5%

NOSE STRIP : NOT LESS THAN 100MM X 2MM







# GLOVES

## SPECIFICATIONS

- MATERIAL : NITRILE
  - Tactile sensitivity: Touch and feel experience with high dexterity.
  - Tear and puncture resistance: Offers superior strength and durability
  - Powder free: Eliminates powder-related complications and sensitivity.
  - Nitrile formulation: Delivers highest protection for wide range of chemicals.
  - Low particulate: Minimises glove-related contamination.
  - Textured fingertips: For enhanced nonslip grip, wet or dry.
  - Latex free: Prevents latex-induced allergies or skin irritations.
  - Double washed: Will not foam on wetting
- SIZE : MEDIUM / LARGE



# SHOE COVER

## SPECIFICATIONS

- TYPES :
  - Ankle Length
  - Knee Length
- MATERIAL :
  - Type 1 Polythelene (PE)
  - Type 2 Non Woven Fabric (NFW)
- SIZE :
  - PE Ankle Length 380mm x 145mm
  - NWF Ankle Length 390mm x 150mm
  - PE Knee Length x Width: 18" x 16"
  - NWF Knee Length x Width: 18" x 16"
  - Shoe Opening (Stretch): 9"
  - Shoe Elastic: 6"







## FACE VISOR

In the wake of COVID-19 Pandemic that has struck the world, we have developed a product which will help the people protect themselves from the deadly virus. Undoubtedly, all the heroes, who have stepped up to provide services in this delicate situation, require to work with maximum protection.

The Face Visor is suitable for wearing as protective gear against corona virus, this is simple and easy to use product which has to be worn like a head gear which protects your Forehead, Eyes, Nose, Mouth & Neck. The Face Visor is made of Polyethylene Terephthalate, commonly known as PET which is clear transparent, lightweight & recyclable, which can be used multiple times by sanitising it. Since Corona Virus is not an airborne disease and can only infect a person who is in direct contact with the infected person and also just as a protective measure as we touch the surroundings near us, the face visor ensures you don't touch your sensitive parts or the face mask.

### Product Details:

Product Name: Face Visor/Face Shield

Coverage: Forehead, Eyes, Nose, Mouth & Neck

Protection: Spattering from an infected individual

Size: L : 220mm x 220mm x 220mm (L x W x H)

XL : 220mm x 220mm x 300mm (L x W x H)

### Users:

Doctors on and beyond second line of defence

Sanitation Workers

Police

Street Vendors

Shopkeepers

Citizens who need to move out for essentials

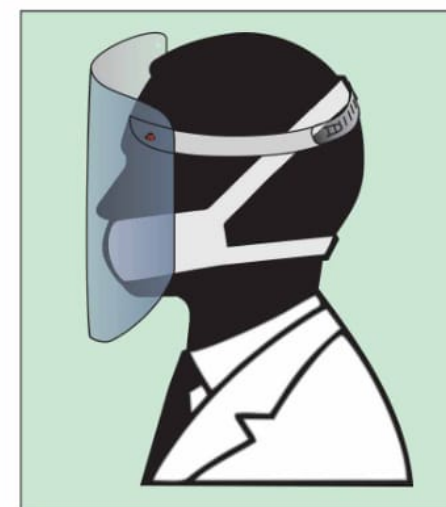
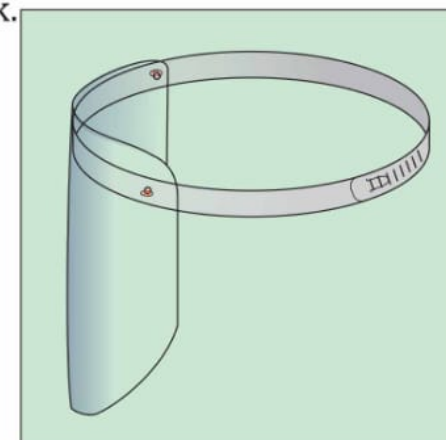
### Material:

PET (Polyethylene Terephthalate)

Colour: Transparent

Thickness: 350 Micron

Sterilization: Sanitizer, Soap Water







# GOGGLES

- With transparent glasses, zero power.
- Accommodates for prescription glasses.
- Covered from all sides. Covers the eyes and surrounding areas.
- Flexible frame to easily fit all sizes and types of faces without too much pressure.
- Scratch and fog resistant. Indirect venting to reduce fogging.
- Adjustable band to secure firmly so as not to become loose during clinical activity.
- May be re-usable (provided appropriate arrangements for decontamination are in place) or disposable.
- Quality compliant with below standards or equivalent to:
  - A. EU standard directive 86/686/EEC , EN 166/2002
  - B. ANSI/SEA Z87.1-2010







# WASTE BAG

Our Bio-hazard waste bags are marked with the international biohazard symbol. Our plastic biohazard bags alert others of the biohazards waste contained within and ensures correct handling.







# ACCOMPLISHMENTS & CERTIFICATIONS

S4 Healthcare Pvt Ltd is proudly certified by the standards and platforms mentioned below. We appreciate their support and recognition in aiding our mission to provide qualities and innovation to make products that are safe for healthcare and safe for you.





Unit 22-25 Sheetal Supreme Industrial Estate No. 2, Sativali Road  
Vasai (East) Maharashtra - 401208  
Contact No: +91 7385033785 / +91 22-67348888  
Email: [info@s4healthcare.com](mailto:info@s4healthcare.com) / [sales@s4healthcare.com](mailto:sales@s4healthcare.com)  
Website: [www.s4healthcare.com](http://www.s4healthcare.com)



# 2019 – nCoV WUHAN CORONAVIRUS

## SYMPTOMS



HIGH FEVER



COUGH

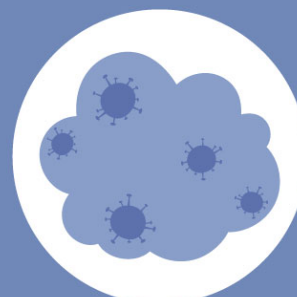


SORE TROATH



HEADACHE

## CONTAGION



AIR BY COUGH  
OR SNEEZE



PERSONAL  
CONTACT



CONTAMINATED  
OBJECTS

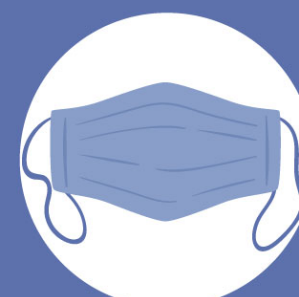


ANIMAL  
CONTACT

## PREVENTION



WASH YOUR  
HANDS OFTEN



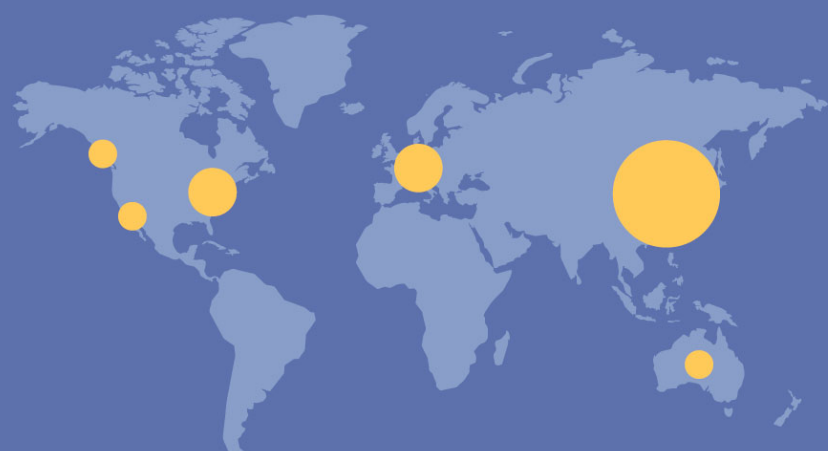
WEAR A  
FACE MASK



AVOID CONTACT  
WITH SICK PEOPLE



ALWAYS COVER YOUR  
COUGH OR SNEEZE





# HOW TO USE HAND SANITIZER

1



## STEP ONE

Place a drop of sanitizer, the size of a dime in your palm

2



## STEP TWO

Rub hands palm to palm

3



## STEP THREE

Backs of fingers to opposing palms with fingers interlocked

4



## STEP FOUR

Once dry your hands are safe



# HOW TO **WASH YOUR HANDS**

PROTECT YOURSELF AND OTHERS AGAINST INFECTIONS



Wet hands



Apply soap



Rub hands  
palm to palm



Lather the back  
of both hands



Scrub between  
your fingers



Rub the back of  
fingers on the  
opposing palm



Clean thumbs



Wash fingernails  
and fingertips



Rinse hands



Dry with a  
single use towel



Use the towel  
to turn off the faucet



Your hands are clean





It may be tempting to get in touch or contact with family and friends keep in mind that their safety is just as important as your own. Maintain Social Distancing. It is perhaps single handedly the only way we can stop this virus from spreading. Use social mediums to communicate.

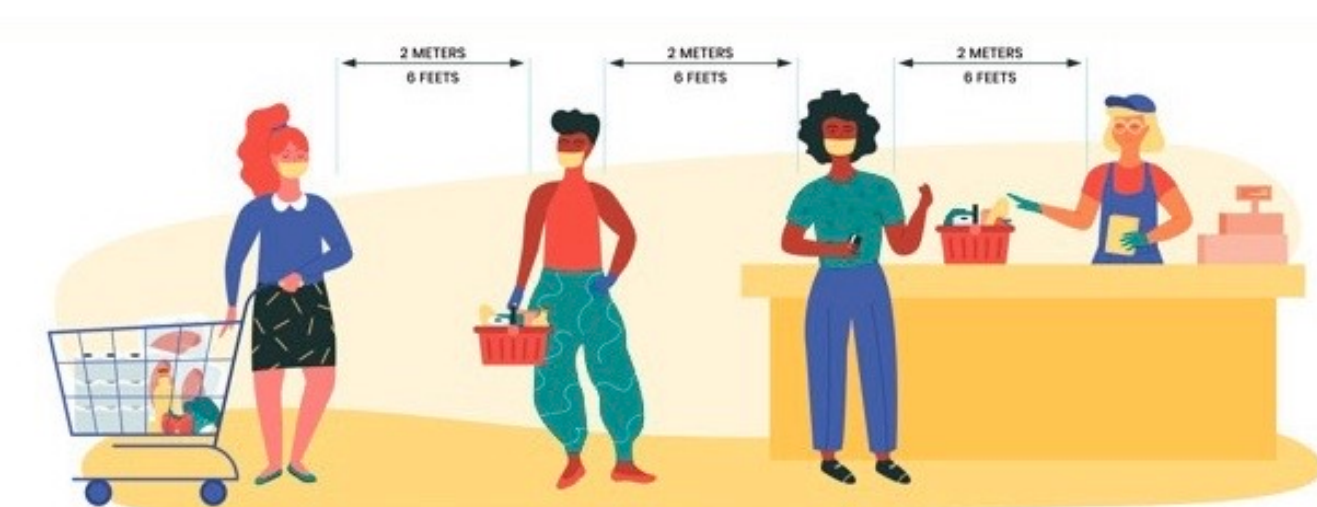


Keep checking in on your family and friends. Check in on people you know are alone. Loneliness can cause severe deterioration of health. Remember mental health is just as important as physical health.



designed by freepik

Work from home. Conference calls can help in maintain your work flow. Avoid meeting in clusters. Dont let your work cost you your life. It's a great way to keep busy and to check in on your peers at the same time.



Remember to maintain 6 Feet (2 Meters) of distance at grocery stores and chemists. Be patient.



Thankyou to our doctors working on the front line  
risking their lives to save our lives.



Thankyou to those who are carrying out intensive search and  
developing vaccines



Thankyou to those who are carrying out tests for the general  
public.



Thankyou to our heroes.



Thankyou to those who are mindfully disinfecting and keeping places of  
contact sanitised, disinfected and clean.

Old age homes are experiencing more deaths due to loneliness and inactivity  
than corona virus. Thankyou to the doctors and nurses at old age homes who  
are doing everything they can to prevent this from happening.



Thankyou to generations of nurses and doctors who have come out of  
retirement, those who are currently working and the medical students  
who have volunteered to protect and care for those in need.



**Airline Workers :** Pilots, Air-hostesses, In-flight & Off-flight staff are ensuring that requirements for various essential commodities are reaching counties in need globally.

**Hospitality Workers :** Chefs, Waiters, Delivery agents, Hotel staff are working beyond their entailed duties to ensure people within their cities are fed and are receiving any essentials they need.

**Construction Workers :** Builders, Architects, Infrastructure technicians and engineers are strategising and putting up temporary hospitals and isolation wards, testing booths to ensure treatment and accommodation is available for as many infected people as possible.

**Government Officials :** Legal Authorities, Judiciaries, Government panels, Ministers, Presidents, Various Parties are imposing and taking precautionary measures with immense research and strategy for the safety of their nations and global health every day.

**Armed Forces :** All Air Force, Army and Police Officials are putting their life on the line to keep laws in place and protecting the population from those who violate or do not understand the significance of social distancing. They are working around the clock to contain the movement of



It is important to include all the people working tirelessly around the clock for the well being of our world in our prayers and in giving thanks. They too are risking their lives every second of every minute of everyday to ensure you still have yours. With due respect please comply with and co-operate in helping yourself and the people around stay safe.

**Healthcare Providers :** Manufacturing units, Pharmaceutical companies, their Labour and Administration workers, Delivery agents who are putting their lives on the line to travel back and forth to their factories in order to produce protective equipment such as disposable medical products (Masks, Gowns, Gloves etc) and Medicines to fulfil government and global requirements are operating 24/7 and ensuring you get quality products and in immense quantities.

**Entertainers :** Musicians, Artists, Bloggers, General Public are ensuring that lockdowns are filled with healthy activities and entertaining sources to keep you busy and mentally healthy. So do not forget to thank your friends, your peers, entertainers and yourselves.

**Navy Personnel :** Navy officials are risking and supporting us all by coming in direct contact with infected patients by sheltering them in ships that have temporarily been converted into isolation and hospital wards.

**Shopkeepers :** Chemists and Grocery Stores are ensuring people receive the essential items they need while taking care of anyone in need around them. They too are risking their lives everyday while catering to crowds of people tirelessly.

**Journalists :** News Channels, Writers, Newspapers are making sure they keep you informed 24/7 and are helping the general public differentiate between and eliminate any fake news.

**Healthcare Workers :** Doctors, Laboratory staff, Research units, Nurses, Pharmacists, Hospitality staff in hospitals, Security, Volunteers, Medical students, Hospital Procurement units are all directly in line of risk. They are working on the front line around the clock to ensure the safety and recovery of infected and affected patients while checking and analysing the remaining general public. Those who are working on vaccinations and those who are studying the virus for more information for better preventive measures and the immense amount of supporting and assisting staff.